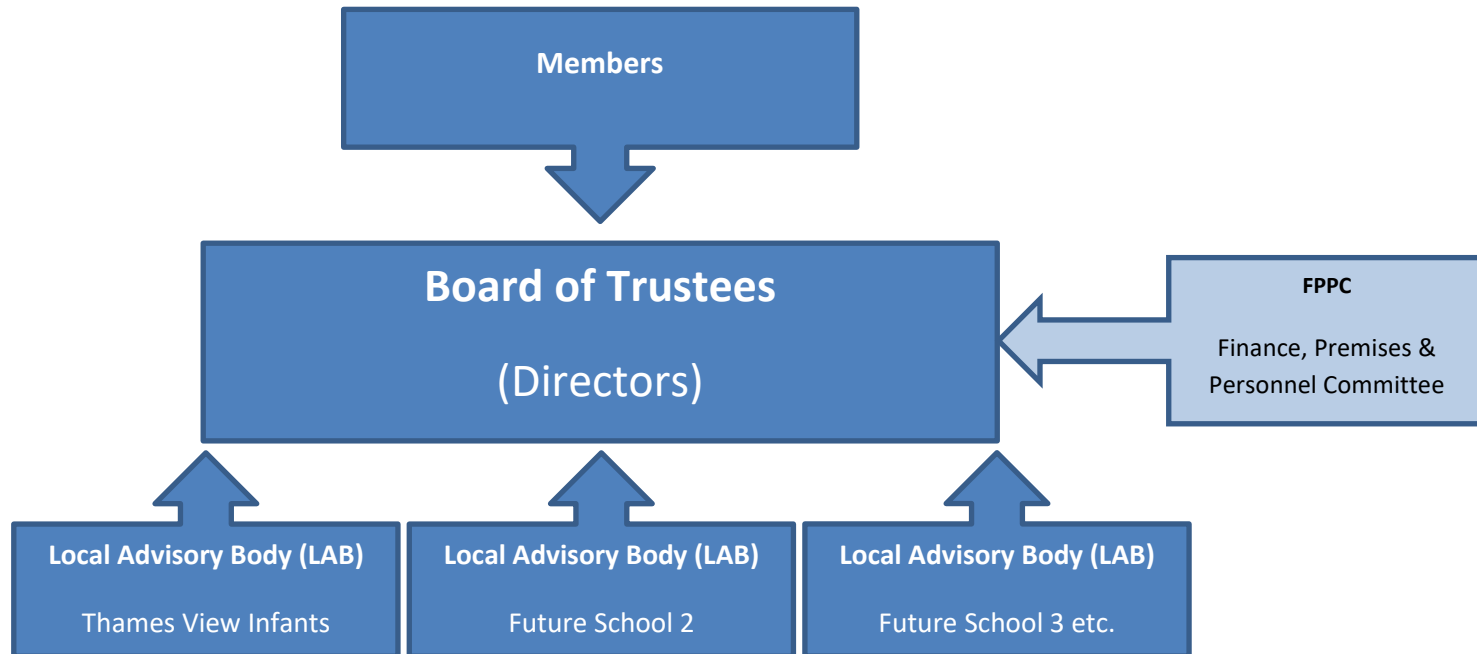


Governance Structure

TVI Learning is a Multi Academy Trust (MAT). There is a detailed and comprehensive Governance Plan that covers all aspects of the governance of the MAT. The main structure and plan highlight the details of roles and responsibilities as set down in the Scheme of Delegation.



Members

Academy Trusts are founded by Members who have a general duty to exercise their powers, to further the Academy Trust's charitable purpose.

Board of Trustees

The Board of Trustees, led by the Chair, is the decision-making body of the Academy Trust and is accountable and responsible for all the Academies within the Academy Trust. Collectively, Directors bring together a diverse range of experience, expertise and skills to achieve this aim. At the time of publication, Thames View Infants is currently the only School with the TVI Learning Trust.

Local Advisory Body (LAB)

In TVI Learning, the Board of Trustees decides which governance functions they delegate to the LAB. This is clearly seen in our Scheme of Delegation. As our Trust grows, each School will have its own LAB, which oversees the assigned governance function of their respective School.