



# Thames View Infants

## Ndekọ Banyere Agụmakwụkwọ na

Ndewonu ndị nkuzi na ndị isi ụlọakwụkwọ anyị na nnukwu ụlọakwụkwọ nke ọhaneze maara nkeoma, nke ndị si na mba dị iche nọ agụ akwụkwọ na ya.

Ekwenyere m na ụmụaka nwere naanị ohere ole na ole ị mee nkeoma n'ụlọakwụkwọ, nke mere na mgbali m niile kemgbe ihe karịrị afọ asatọ dika onyeisi ndị nkuzi bụ ime ka nkea bụrụ ihe ga-ekwe omume: ya bụ inye ụmụaka na ezinụlọ ezi agụmakwụkwọ na nduzi bụ igba.

Anyị enweela ihe ị ga nkeoma na nke a: Thames View Infants enweela ihe ihe doro anya ha mereela ma bụrụ ụlọakwụkwọ ndị so na pasent 20 bụ ndị kasị eme nkeoma na ala anyị niile ruo otụtụ afọ ugbu a, ma bụrụkwa ụlọakwụkwọ ụmụaka kasị eme nkeoma n'okeala Barking na Dagenham, ma karakwa otụtụ ụlọakwụkwọ kasị eme nkeoma na London niile. DfE enyela anyị iheugwu dika ụlọakwụkwọ bu ụzọ na ndị n'enyefe enyemaka pụrụ iche n'agụmakwụkwọ.

Ofsted hopụtara anyị dika "Ọpuruiche" ugbo abụọ (na 2009 ozọkwa, na 2014). Anyị kwenyere n'anyị ga-anogide n'eme otu ahụ.

Ndị nkuzi m na mụ nọ ebea ime ka gị na ezinụlọ gị nweta ihe unu chọrọ. Burunu n'obi biko n'anyị ga-anwa ike anyị ime ka nwa gị nweta agụmakwụkwọ bụ igba ma nye ezinụlọ gị ezi nkwa.

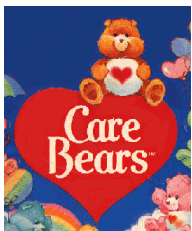
Anyị tinyere ndekọ n'ihe ndị dị gị mkpa ebea.

Itinye nkwa gị doro anya na nlekota, nwa gị ga-enweta ihe niile kwesiri ka omuta tupu ya apụ ebea maka ogo agụmakwụkwọ ndiyo: Nnukwu nwa amaala Briten – akwadoro nkeoma, nwere obiike, ndị ndu odinihu, nwere obiebere, n'echiche echiche nkeoma, n'enyere ndiyo ohere na ndị mmuta nke nke iheogugu na mgbakọ.

Paul Jordan,

**Onyeisi.**

## Eji Mara Anyị



Na Thames View Infants anyị n'arushi ọrụ ike inye nlekota, nkwa n'egwuregwu nke nwatakiri ọbula an ezinụlọ ga-enwe obiuto na ya.

Anyị nwekwara ebe omumu ihe mara mma, nke ga-eme ka onye ọbula nweta ezi iheomuma zuru ezu n'agbanyeghi ebe osi bido.



Anyị n'akuziri ụmụaka inwe nsopuru, nwee nkwanye ugwu ebe ụmụakwụkwọ ibe ha na ndị okenye nọ, ebe ha mara na ha si ebe dị iche iche ma bụrụkwa ndị dị iche n'ebe ndiyo nọ mgbe ha si ebe a pụọ.



Anyị chọrọ ka ụmụaka n'enwe obiọto na mmụta ha ebea, n'ihina ha nwere ebe mara mma maka ọmụmụihe ha n'ebe mara mma, ma burukwa ndi ana elezi anya, ndi eji kporo ihe, n'ime ka ha buru ndi tozuru oke ma nwe ike ime mkpebi ma ngoro onwe ha mgbe ha tozuru ime mkpebi.

**MR. HAPPY**

By Roger Hargreaves



Anyi n'agbali ime ulokwukwo anyi k'oburu ebe onye obula ga-enwe mmasi na ya, nke ga-eme na ndi muru umu na ndi nkuzi ga-eji n'aruko oru onu maka inyere umuaka aka n'ikwado ha.

Ka anyi n'agbali inyere ezinulo aka inweta ezi ihe site n'aka anyi n'enye karja nkea.



Nkeozo, anyi na ndi ma nke ha riri n'oru mmuta n'ogo di iche iche na gburugburu ebe anyi no n'akparita ma nwee obioto n'anyi n'eme otu ahụ. Ha gunyere **Thames View Junior School**, The Sue Bramley Children's Centre, The Chestnuts Nursery, The Thames View Medical Centre, Sparrows Nursery (nke amabu dika Christchurch), Social Services, ulokwukwo ndi di nso na uloru ndi n'enye nkwo n'okeala London Borough nke Barking na Dagenham.

N'ijiko aka onu, anyi n'ejikota otutu ezinulo onu maka ezi mkparita



## Oge Agumakwukwo



<b>Mbido</b>	Afo 3-4	8:45 ututu ruo 11:45 ututu na 12:30 ehihie ruo 3:30 ehihie
<b>Nke n'esochi</b>	Afo 4-5	8:55 ututu ruo 11:45 ututu na 1:00 ehihie ruo 3:15 ehihie
<b>Afo 1 na Afo 2</b>	Afo 5-6 Afo 6-7	8:55 ututu ruo 11:45 ututu na 12:15 ehihie ruo 3:15 ehihie

Biko gbalja ihu na nwa gi bjara n'oge. A na-ebido agumakwukwo kwa ubochi site n'ime iheogugu maobu ime mgbakwo nke ga-eme ka nwa gi ghara imutasi ihe niile kwesiri maoburu n'obighi n'oge.



Gbalja ihu n'ibjara nkeji 5 tupu agumakwukwo ebido, nke putara n'igaghie egbu oge iche ogologo oge, karisia n'oge oyi.

Any nwere ohere maka inye nri ụtụtụ maka ndị nne na nna n'arụ ọrụ ndị nọ n'ogo KS1, nke na-ebido na elekere anya 8 nke ụtụtụ, nke ga-eru mgbe oji nkeji 20 gafee elekere anya 8. Ndiọrụ anyị n'elekota ụmụaka. Onwere obere ego a na-akwụ. Nke mbido anaghị abụkarị maka ụmụaka niile nke n'ọburu n'ichoro ka nwa gi sonye na ndi ga-achọ isonye maka nkwado nri ụtụtụ, biko bja ka gi na Claire Smith kparita maka ya, onye n'esote m.



Ọburu n'ibighi n'oge, biko ahapula nwa gi n'ulo maka ubochi ahụ - anyi ga-anabata ka nwatakiri bja n'azu oge karja abighi ma oji. Mgbe ibjara i ga-ahu ndi oru nke ga-edebanye aha nwa gi maka ubochi ahụ .Emekwara nkwado maka nri abali ya.

## Ihe Ụlọakwụkwị N'enyefe

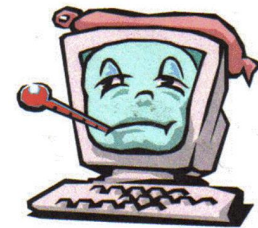
Dika ụlọakwụkwọ gbasara nnukwu, anyi n'enyefe ụmụaka ohere ime egwuregwu di iche iche n'oge uhuruchi nke bu n'efu. Ndi a gunyere inye ozuzu n'ime egwuregwu bolu, igba egwu na iji igwe komputa eme ihe. Iji kwusie ya ike, oge a anaghị adabachara ụmụaka niile mana anyi n'agbali ihu n'elebara anya n'ihe niile ụmụaka chorọ iji hu n'onweghi onye eleghaara anya.



Anyi nwekwara ndi n'enyefe nna na nne ndumodu, ndi n'ejiko otu di iche iche maka ndi nna na nne, ma nyeaka gbo nsogbu obula daputara. Biko bja gwa anyi nsogbu na nchegbu gi niile tupu ha ebuo ibu.



Ụmụaka niile ndi nọ n'afọ agumakwukwo nke 2 ga-enwe ike weta iPad maobu sonye n'heomume efu nke anyi bu Buy-Back Scheme. Anyi ji nkanuzu nke ogbara oheru nke komputa kporo ihe nke n'anyi enwetala otutu ihe nrita na asompi maka ya. Ụmụakwukwo anyi n'ejikari igwe komputa eme ihe, gunyere Ipad, Androids, Wiis/Xboxes na nkanuzu ndiozo eji eme ihe.



Onye n'ahu maka nkanuzu ga-enwe ike zaa ajuju niile inwere banyere komputa gi. Bja ka gi na ya kwuo okwu. O ga-enyeaka ole onwere ike.

O na-amasi anyi ka ndi nne na nna n'esonye n'ihe ndi anyi n'eme. N'ihina ezi mkparita n'etiti ndi muru umu na ulokwukwo di nnukwu mkpa. Onwere uzọ di iche iche anyi na ha kwesiri isi n'enwe mkparita ka ha nwe ike n'amata ihe n'eme mgbe ha anoghi ya:

Nke mbu bu site na inweta APP anyi site na inanet. o ga-enye gi ohere:

- ✓ Igwa anyi ihe ibu n'uche
- ✓ Igu ihe banyere anyi na blog
- ✓ Ile emume ndi anyi nwere
- ✓ Iga na websaiti anyi
- ✓ Ikpotururu anyi oge awa anyi anoghi ya.
- ✓ Ideba aha na ndi anyi ga n'ezigara ozi metutara anyi kwa mgbe (nke ga-eme ka aghara inwe ozi ndi inwetaghil!)



Mụ na ndịorụ m niile n'ejị twita akparịta kwa ụbọchị: ọbụ ụzọ kasị mma ma dị ngwa ngwa iji mara ihe n'eme n'ụlọakwụkwọ oge niile. Ya mere banye n'ebe mkparịta ụka twit aka imatakwo maka ya:

follow us on  
twitter

@TVInfants (Paul Jordan, Onyeisi)  
@ClaireTVI (Claire Smith, Onye n'esote onyeisi)  
@Khaled\_a\_Ali (Khaled Ali, onyeisi EYFS)  
@TVI\_MissJones (Rosa Corcoran-Jones, onye enyemaka onyeisi)  
@FiBashirTVI (Fi Bashir, onye n'ahụ maka mkparịta nne na nna ụlọakwụkwọ)  
@TVI ICTSupport (Simon Mordecai, onyeisi ebe iheomumụ komputa)



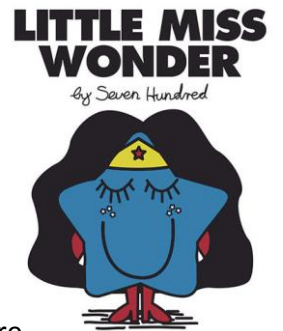
lee anyị n'awara "YouTube" ... [Thames View Infants TV \(TVI TV\)](#).

Onwere ihe nkiri karijri 250 maka ndị nkuzi n'ihe gbasara omumụ ihe.

Ọkacha mma ihu ndị nkuzi anyị ihu na ihu, ma karịsịa n'ihe metụtara omumụ ihe. Ka osinadi, anyị maara na ndị mụrụ umụ anaghị enwe ohere nke n'ọ na-esi ike inwe ohere mee mkparịta ụka. Ọbụrụ na gị maọbụ nwa gị, nwere ajujụ maka ihe akuziri n'ụlọakwụkwọ maọbụ choọ ndumodu maka igu akwụkwọ n'ụlọ, ziga ozi imel ebe a:

[HomeworkHelp.TVI@bdcs.org.uk](mailto:HomeworkHelp.TVI@bdcs.org.uk)

Ndị nkuzi anyị ga-agbalị ịza gị ajujụ gị niile maọbụ nye gị oge nke ga-akara gị mm aka gị na ha hụ.



**Efe akwụkwọ** dị nnukwu mkpa n'ụlọakwụkwọ anyị. **Iyi uwe akwụkwọ** n'enyere nwa akwụkwọ imara n'osonyere. Umụaka n'eyikwa akwa polo nke dị n'ụlọorụ dị n'ụlọakwụkwọ anyị n'odị dị iche iche nke ruru 6 - d i ọcha, n'acha ka anyanwụ, edo edo, na ndịozọ. Umụaka nwere ike iyi nkeobula ụbọchị ọbula ọmasiri ha, mana ha ga-eyiri polo ejiri mara anyị. Mana ka ọghara iwute gị n'anaghị enye umụaka ohere iyi ihe olu na ihe ntị.



Ọdighi mma ka umụaka yiri akwa n'ekpo ahụ ọkụ bịa akwụkwọ mgbe niile. Ha n'agbagnarị nnukwu n'ụlọakwụkwọ nke na ha yiri ihe ekwesighi (akwa jikpara ahụ, nke jikpara ukwu na nke gbagoro elu nnukwu) ga-eme ka ahụ ha di ọkụ. Ọ ga-eme ka efe ha fuo mgbe ha yipuru ya maka inara ikuku. Biko yinye nwa gị akwa kwesiri maka oge ọbula. Anyị ga-enyere ha aka inwe ezi ahụike, (nke gnyere inyere ha aka iyipu uwe ha mgbe kwesiri).

## Ibichite Anya

Ọbụ ihe iwu kwadoro na umụaka kwesiri i na-abichite akwụkwọ anya mgbe niile. Ndị nna na nne ha maobu ndi nlekota ha kwesiri ime ka nke a kwe omume. Abiaghị akwụkwọ, n'abughị n'ih i ahụ esighi ike, bu ihe anyi agaghị anabata.





Ezinụlọ niile ịnabata ụbọchị ezumike niile.



Agaghị enye ezumike ọbụla n'oge agụmakwụkwọ. Nna na nne ọbụla nke mere otu ahụ maọbụ gafee ohere enyere maka ya ga abanye na nsogbu nke:

- ntaramahụhụ nke agwara ha agwa(ikwụ ụgwọ) maka onye okenye NA nwatakiri(ọbụrụgodị n'ụmụaka ndịozọ n'aga n'ụlọakwụkwọ ọzọ dị iche)
- ịchụpụ nwa ahụ n'ụlọakwụkwọ.
- Imegharị ndebagharị n'aka ndị omeiwu ime obodo maka ụlọakwụkwọ ọhụrụ
- Iwere ndekọ banyere ezinụlọ ahụ nyefee ndị ụlọorụ ndekọ nke Borough.

Mana ọbụrụ na nwa gị achọghị ịbịazi akwụkwọ, gwa anyị. Onwere ihe kpatara ya. anyị ga-enye aka igbo nsogbu ahụ.



Ịbịachite akwụkwọ anyị dị nnu kwu mkpa maka nwatakiri ọbụla ime nkeoma.

## Gịni Ka M Ga-Eme Maọbụrụ Na Nwa M N'aria Ahụ

Ọbụrụ n'ọnọdụ ahụike nwa gị adighi mma, hapụ ya ka onweta onwe ya nkeoma n'ụlọ.



Ọbụrụ n'ọdị otu ahụ, anyị si gị ka ịkpọtụrụ anyị ebe a [\(020 8270 4317\)](tel:02082704317) maọbụ ziga ozi ebe a [\(07943 922 655\)](tel:07943922655) n'ụlọ akwụkwọ site na elekere 10 nke ụtụtụ ụbọchị ọbụla ha anọghị ya gwa anyị ka ọdị ha. Anyị n'agbaso ntuziaka gomenti n'ihe metụtata ahụike ma nyekwa gị ndumọdụ.

Anyị n'enyekwa nlekota n'enyemaka kwesiri, nke ga-enyere nwa gị aka ịbata mgbe kwesiri n'uzọ di iche iche:

- Inye ya ọgwụ (maọbụrụ n'imere ndebanye maka ya n'ụlọorụ anyị)
- Ilebara ha anya nkeoma na igwa gị ka ọdị .
- Igwa onye GP n'ebe di nso na Thames View Medical Centre.
- Inye nri nke masiri ha n'oge iri nri ehie (na nhazi emere maka ya)
- Inyere gị na nwa gị aka mgbe ihe siere ike maọbụ n'ọbụrụ n'ona esiri gị ike ịkpota n'ụlọakwụkwọ ụtụtụ.
- Inyere aka inweta ihe ha esonyeghi.



## Gịnị Bụ "Ịbịachite Akwụkwọ Anya"?

N'ihina abjaghị akwụkwọ ga-emetụta nwatakiri, **gomentu eguzobela otu n'ahụ maka ụmụaka ibjachi akwụkwọ anya nke akpọrọ National Target for School Attendance, nke n'ahụ n'umụakwụkwọ biazuru akwụkwọ ihe ruru pasent 95 na oge enyere maka agumakwụkwọ.**



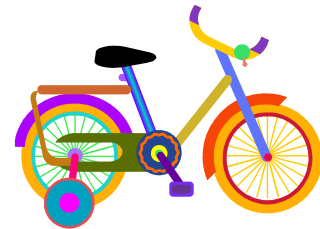
Nke a pụtara afọ ọbụla, ụmụaka n'ahapụ ibjia akwụkwọ 1 ugbo n'ọnwa (maobụ ọkara ụbọchị kwa izu) Anyị nwere nnukwu ihe ndaba, n'ihina ụmụaka anyị abughị ndị eji ihapụ akwụkwọ mara.

Ka ọdị ugbo a na Thames View Infants ọtụtụ ụmụaka n'aga akwụkwọ kwa ụbọchị ma n'abjazu ụbọchị niile.



N'oge mmechi agumakwụkwọ niile, anyị n'enye ezinụlọ niile biazuru akwụkwọ onyinye pụrụ iche nke a na-akpọ "Flower Assembly".

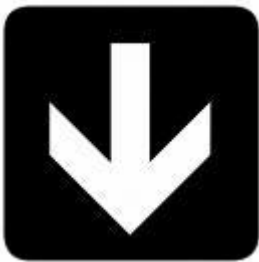
Anyị n'enyekwa nwatakiri ọbụla igwe eji eme mgbaghari, n'ihina igosi mgbali pụrụ iche ka osi abjia akwụkwọ kemgbe ogologo oge.



## Kedu ka m Ga-esi Mara ka Nwa m si Abjia Akwụkwọ?

Anyị n'ezinụlọ niile n'arụkọ ọrụ ọnụ ihu na dika ụlọakwụkwọ anyị n'elebara ka ụmụaka si abjia akwụkwọ anya . N'oge na oge anyị n'ahụ ma obelatala ma kwuokorjita okwu banyere ya ọnụ.

N'oge n'oge, anyị n'eleba anya na ndekọ ka ụmụaka niile si abjia akwụkwọ. Kwa mmechi oge agumakwụkwọ ọbụla, anyị n'edegara ndị nna na nne akwụkwọ iji mara ma ka ụmụ ha si bja akwụkwọ ọdabara na ndị a:



- ✓ Pasent 100 (ọbiazuru ha niile)
- ✓ Pasent 97 (ọhapụrụ ibjia otu ọkara ụbọchị n' ọnwa)
- ✗ Nọ n'okpuru pasent 95 (ọkara ụbọchị abalị anọ ọbụla)
- ✗ Nọ n'okpuru pasent 90 (ọkara ụbọchị kwa izu)
- ✗ Nọ n'okpuru pasent 85 (otu ụbọchị kwa izu)
- ✗ Nọ n'okpuru pasent 75 (otu ụbọchị n'ọkara kwa izu)



Ọbụ eziokwu na mgbe nwatakiri bjiara akwụkwọ ihe ruru pasent 90, apụrụ isị n'ọdị elu, mana n'agumakwụkwọ, pasent 10 ahụ ọhapụrụ ibjia akwụkwọ pụrụ ime ka oyie onye hapurū akwụkwọ ruo otu afọ. Mana ọbụrụ n'imee ka anyị mara site n'idetara anyị akwụkwọ, anyị na gị ka arụkọ ọrụ ọnụ ihu ihu n'ọnọdụ ahụ gbanwere ma nyere nwa gị aka inwe ezi mmụta.



## Gịnị n'esi n'igha Akwụkwọ Apụta?

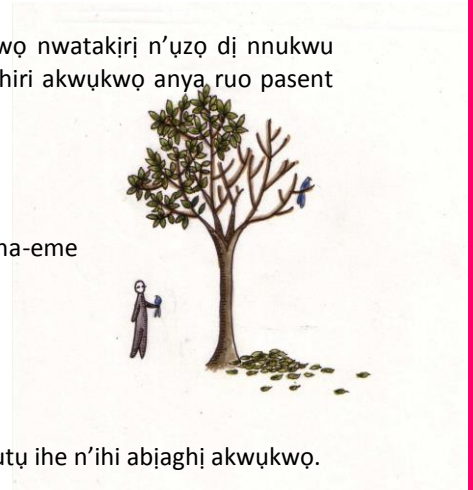


Anaghị abjachi akwụkwọ anya ga-emetụta agụmakwụkwọ nwatakiri n'uzọ dị nnukwu njo. Dịka nchọpụta emere si dij, ọbụ nwa akwụkwọ b'achiri akwụkwọ anya ruo pasent 90 n'eme nkeoma n'ule ma nweta ezigbo ọrụ n'ikpeazụ.

Ụmụaka ndị anaghị abjachi akwụkwọ anya n'enwe nsogbu isonye nhe a na-eme n'ụlọakwụkwọ n'inweta ndị enyi.



Ọ na-esiri Ụmụaka ike isochi anya mgbe ha hapụrụla ọtụtụ ihe n'ihị abjaghị akwụkwọ.



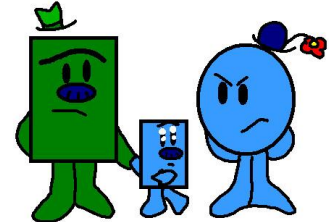
N'oge n'oge, ọbụ ụmụaka anaghị abjachi akwụkwọ anya n'abanye na sogbu.



Ụlọakwụkwọ Academy Trust na ndị London Borough maka Barking na Dagenham Local Authority, n'arụkọ ọrụ iji hụ ụmụaka n'agachi akwụkwọ anya. Ha ga-akpuga nna na nne nke enyereghị nwa ha ohere iga akwụkwọ oge niile n'ụlọikpe n'ihina ọbụ jda iwu. Nna na nne/onye nlekọta nwatakiri ga-aba na nsogbu nke i ga ụlọikpe, i ga ụlọakwụkwọ ọzuzụ ụmụaka maọbụ gaa mkpọrọ maka ya mgbe osiere ike.

Anyi achọghị kai ihe ọbụla metụta obiutọ nwa ezinụlọ ọbụla nke Thames View Infants.

Ụlọakwụkwọ anyị bụ ebe a na-elekọta onye ọbụla anya nkeoma. Enwere ọtụtụ ndị nwere mmasị isonyere anyị, ọdighị mma ka ezinụlọ ọbụla ghara inwe nkụda mmụọ n'ihị ha enweghị ike zite nwa ha n'ihina okweghị.



## Nhazi Nnabata



Anyi nwere mmadụ ole anyị n'ewe n'ogo ọbụla.

Thames View Infants n'eso nhazi nnabata nke London Borough of Barking na Dagenham n'agbaso.

Ọbụrụ n'onwere ohere mgbe eweresjara ndịorụ, ndịorụ ga-ewere ha tinye ebe kwesiri mgbe ha matasiri ọndụ eji ewe n'orụ nke ga-eme na ha ga-etinye ụmụaka niile ebe kwesiri itinye ha n'ebe ekwesighi. Ihe a na-ele anya eji eme nnabata bụ ihe ndi a.:

1. "Elekotala Ụmụaka anya".
2. Ụmụaka nwere nwanne nwoke maobụ nwanne nwaanyi nke n'aga akwụkwọ maobụ na Thames View Junior School.
3. Ụmụaka bi nso n'ụlọakwụkwọ ma ejiri ya tūnyere a ga-eji ụkwụ gaa nke dij nso.



Ụmụaka ndị anabataghị ga-abanye n'akwụkwọ edekọrọ ndị eweghị maka mgbe ọzọ.

## Ụzọ isi mee Mkpesa

Anyị n'etinye nnukwu mgbalị inye ụmụaka ezi agụmakwụkwọ. Onyeisi na ndịorụ niile n'agbalị ka ha na ndị nna na nne n'enwe ezi mmekọrịta. Ka osinadi, Thames View Infants, dika ụlọakwụkwọ, n'enye ohere dika iwu si kwuo ka ha depụta ihe bụ mkpesa ha.

Site n'oge ruo n'oge, nna na nne na ndị nlekọta ga-achọ ịma ka ụmụ ha si eme n'ụlọakwụkwọ, ihe ha meputara, akparamagwa maọbụ ihe niile gbasara ha, maọbụ ihe gbasara ụlọakwụkwọ. Nghọtahe ụfọdụ abụghị nke akpachara anya mee, mana ndị nkuzi anyị ga-ege gi ntị ma nyeaka dozie ya. N'oge ụfọdụ, ọ na-akasi mma ka onye nkuzi nwa gi mara maka ya tupu onye ọbụla ọzọ; n'adabere n'ụdị mkpesa ọbụ, mana ọdịkwa mkpa na onyeisi ụlọakwụkwọ mara – nke ga-eme dabere n'ụdị nsogbu ọbụ, hazie okwu ahụ n'onwe ya maọbụ mee ka ndịọzọ mara.

A na-eziga mkpesa niile site n'usoro 4 nke inwere ike ile ebe a: <http://is.gd/19bK7f>



## Iwu N'echekwa Akparamgwa na Nchekwa

Anyị n'agbaso nduzi nke iwu kwadoro iji hụ na ụmụaka nwere nchekwa zuru ezu. N'oge ụfọdụ, ọrụ dịrị anyị bụ inye ụlọorụ n'ahụ maka mmekọrịta ọhaneze maọbụ onyeorụ goment ime obodo (n'ahụ maka nchekwa ụmụaka) maka ndumọdụ maọbụ nduzi ha.

Ọbụkwa ọrụ anyị niile ilekọta na inwe ibuorụ ịrụ ọrụ nkeoma mgbe ọbụla ịno n'ụlọakwụkwọ. Ime otu ahụ, ga-eme ka enwe ezi onọdụ n'ụlọorụ nke ga-eme ka ụmụaka nwe ihe ịga nkeoma. akwụkwọ iwu a dị n'ebe enwere maka ịmado ihe n'ụlọakwụkwọ anyị.

Anyị nwere olileanya na nkọwa niile a ga-enyeaka nke ukwu. Ka osinadi, ọ gwara gi ihe niile anyị n'eme n'ụlọakwụkwọ anyị -mana biko bịa n'ụlọakwụkwọ anyị ka ijụọ ihe ndịọzọ ịchọrọ ịma, dika kofị ụtutụ anyị, ụzọ ị ga-esi nweta ozi anyị kwa mgbe na imel gi...maọbụ ịbịa si anyị dalu!

Ozi ndịọzọ di mkpa di an webụsaiiti anyi:



[TVIacademy.org](http://TVIacademy.org)